

Determining Your Water Usage

Use the following example to help read your meter:

- Select a day to take an initial water meter reading.
- Write down the numbers you see on the meter odometer. (ex. 0260000)
- After a period of time has passed (such as a day or week), read your meter again. (ex. new reading of 0263000)
- Subtract your first reading from the second reading. This is your water usage for that period. (ex. $0263000 - 0260000 = 3000$)
- The 3000 figure indicates that 3,000 gallons of water have been used during the time period between the two readings.



Flow Indicator

Used when measuring very low flow through the meter.

Leak Indicator

If no water is being used inside or outside, this indicator should not be moving. If it is rotating, you may have a leak.

Meter Dial

Place Holder

Indicated by [0]

Meter Register

Every turn of a number in the first black register measures 10 gallons; the second, 100 gallons.

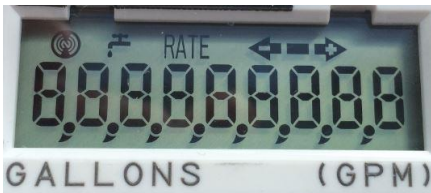
Every turn of a number in the white register measures 1000 gallons



How to Read the Neptune E-Coder® Register

To read your Neptune E-Coder® register, expose the solar panel to sunlight or shine a bright light (i.e. flashlight or cell phone flashlight), and the display will activate.

When activated, the LCD display will first show a segment test:



This screen will be followed by the display of the E-Coder's manufacturing configuration, followed by two (2) reading screens:

Reading - Shows the current read with comma separators and decimal place, after initial activation this screen displays for 20 seconds before toggling to Rate Screen. Each additional Read Screen displays for 8 seconds. The below image shows a reading value of 179.21 (one hundred, seventy-nine) US gallons.



Flow Rate - When the screen toggles, the rate of flow is visible and is shown in gallons per minute for four seconds. Then it toggles back to the read screen. The image below shows a flow rate of 50.7 (fifty) gpm.



	<p>FLOW INDICATOR Shows the direction of flow through the meter:</p> <p>ON Water in use. OFF Water not in use. Flashing Water is running slowly. (-) Reverse flow. (+) Forward flow.</p>
	<p>LEAK INDICATOR Displays a possible leak:</p> <p>OFF No leak indicated. Flashing Intermittent leak indicates that water has been used for at least 50 of the 96 15-minute intervals during the previous 24-hour period. On Continuously Indicates water use for all 96 15-minute intervals during the previous 24-hour period.</p>
<p>RATE</p>	<p>RATE OF FLOW Average flow rate is displayed every twelve (12) seconds on LCD display.</p>
	<p>LCD DISPLAY Nine-digit LCD displays the meter reading in billing units of measure: U.S. gallons, cubic feet, Imperial gallons, or cubic metres.</p> <p>1 E-Coder Basic Reading/Customary 6-digit remote reading 2 Customary sweep hand digits 3 E-CoderPLUS Reading (8-digit remote reading)</p>

